

Cloud Core Router

CCR1009

The CCR1009 is a powerful Ethernet router based on the cutting edge TILERA 9 core CPU.

Two models are available:

- low-cost model CCR1009-8G-1S with with 1GB of RAM, eight Gigabit Ethernet ports, and one SFP cage (SFP module not included).
- full feature model CCR1009-8G-1S-1S+ with 2GB of RAM, eight Gigabit Ethernet ports, one SFP port and one SFP+ port with 10G support (SFP module not included). CCR1009-8G-1S-1S+ model also have dual power supplies built in for redundancy (if one power line fails, the other one will take over automatically). Also, CCR1009-8G-1S-1S+ supports a Smart card, to store your private key for use in all features that support Certificate based authentication.



CCR-1009-8G-1S



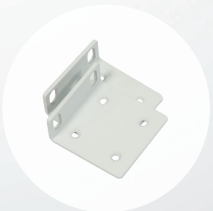
CCR-1009-8G-1S-1S+



IEC Cord



USB cable



Rackmount ears

Model	CCR1009-8G-1S	CCR1009-8G-1S-1S+
CPU	Tilera TILE-Gx8009 CPU (9-cores, 1.2Ghz per core)	
Memory	RAM: 1GB DDR3 800 MHz	RAM: 2GB DDR3 800 MHz
Network interfaces	Eight 10/100/1000 Mbit/s Gigabit Ethernet with Auto-MDI/X	
SFP	1x SFP cage	1x SFP cage, 1x SFP+ cage
Expansion	microUSB port	microUSB port, SmartCard slot, MicroSD slot
Storage	128MB Onboard NAND	
Serial port	One DB9 RS232C asynchronous serial port	
Extras	Reset switch; beeper; voltage, current and temperature monitoring; speed controlled fan	Reset switch; beeper; voltage, current and temperature monitoring; speed controlled fan, LCD
Power options	1x IEC C14 power jack AC 110/220V, PoE in 12-58V, 802.3af/at compliant	2x IEC C14 power jacks AC 110/220V, PoE in 12-58V, 802.3af/at compliant
Max power consumption	34W (with loaded SFP)	35W (with loaded SFP)
Unit dimensions	444x175x47mm	
Temperature	-20C .. +60C	
OS	MikroTik RouterOS v6 (64bit), Level 6 license	
Included	router in a 1U case, IEC power cable, USB cable, rackmount ears	router in a 1U case with LCD, 2x IEC power cables, USB cable, rackmount ears