

ATCOM[™]



Atcom AT530P and Elastix Server Setup Guide

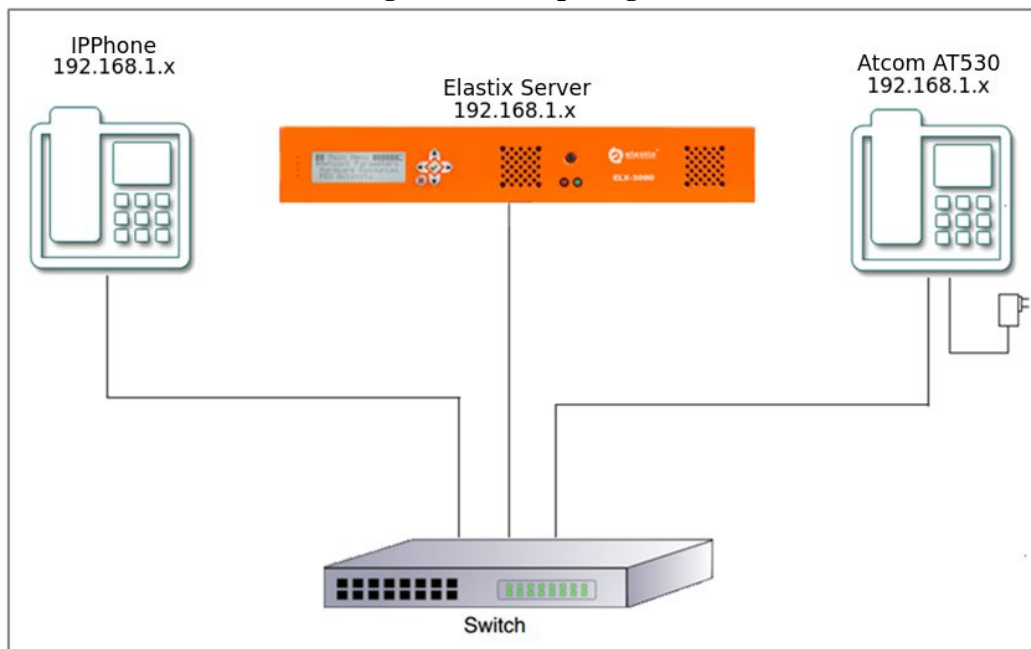




1.0 Setup Diagram

Figure 1-1 is a setup diagram for a single IP Phone AT530P configuration. The phone is setup as a SIP telephony device.

Figure 1-1. Setup Diagram



2.0 Host PC Environment

Table 2-1. Host Server Environment Details

	Description
Hardware Type	Elastix Appliance ELX-Series
Hardware Version	ELX-3000
Software Type	Elastix
Software Version	2.3

3.0 Test Setup Equipment

Table 3-1. Test Setup Equipment

Equipment	Model	Version
IP (SIP) Phone	N/A	N/A
Atcom	AT530P	1.7.493.353
Switch	N/A	N/A

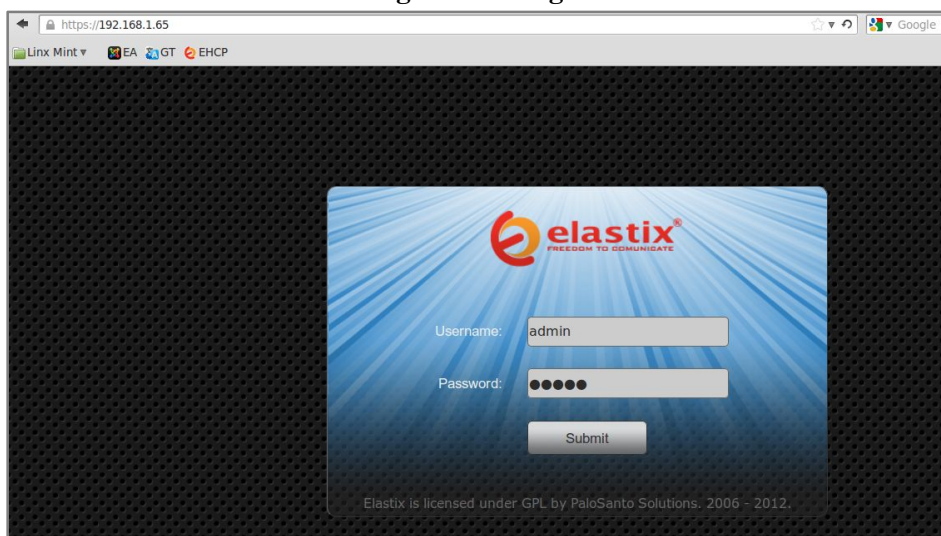


4.0 Setup Procedure

To set up the Elastix Server for the Atcom AT530P,

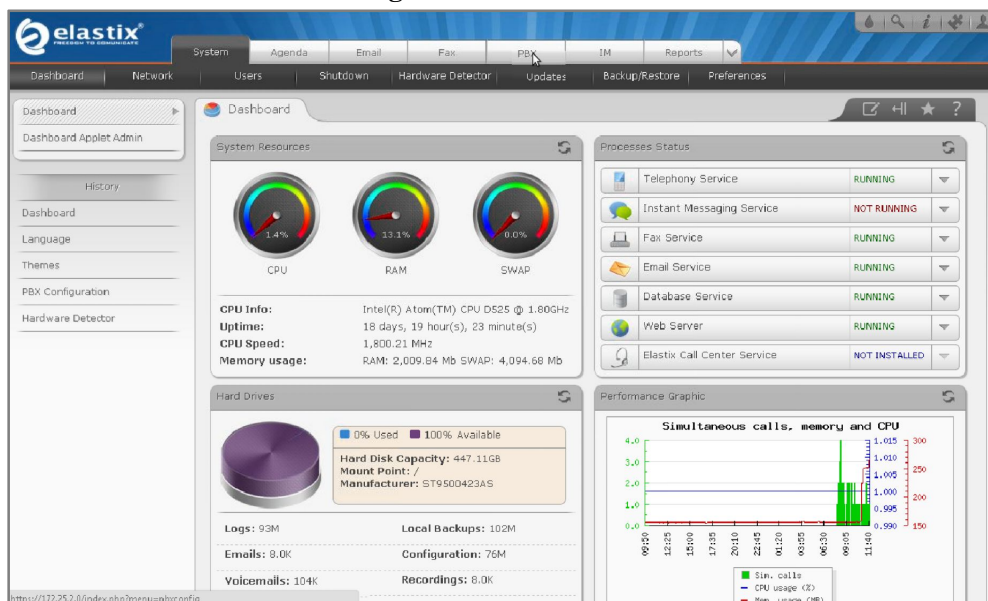
1. Go to the web address of the Elastix Server Login page. The web address is determined by the customer, for this guide we have used the IP address 192.168.1.65
2. On the Login page, type the username and password for an administrative user into the Username and Password fields, see Figure 4-1. The username and password are determined by the customer.

Figure 4-1. Login



3. Press Enter or click on the Submit button to go to Elastix’s Dashboard
4. Once inside, click on the PBX tab on the menu at the top of the screen

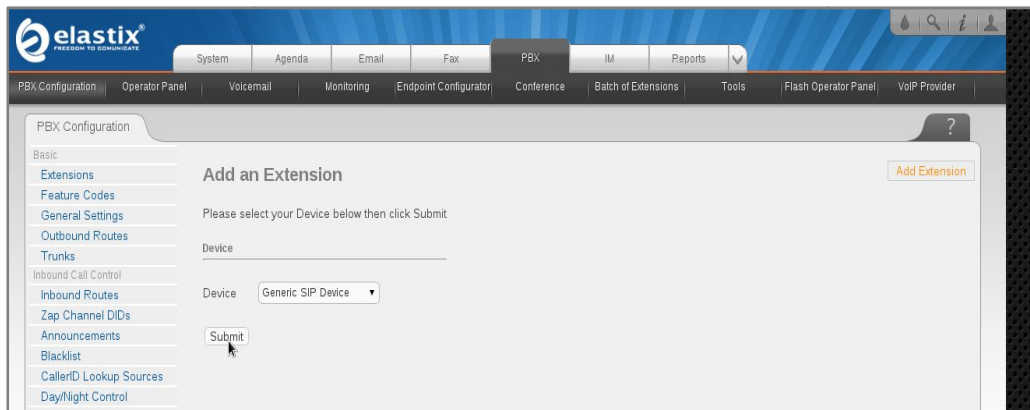
Figure 4-2. Dashboard



5. Click on the Submit button to add an extension, see Figure 4-3. This will take you to the Add SIP Extension page.



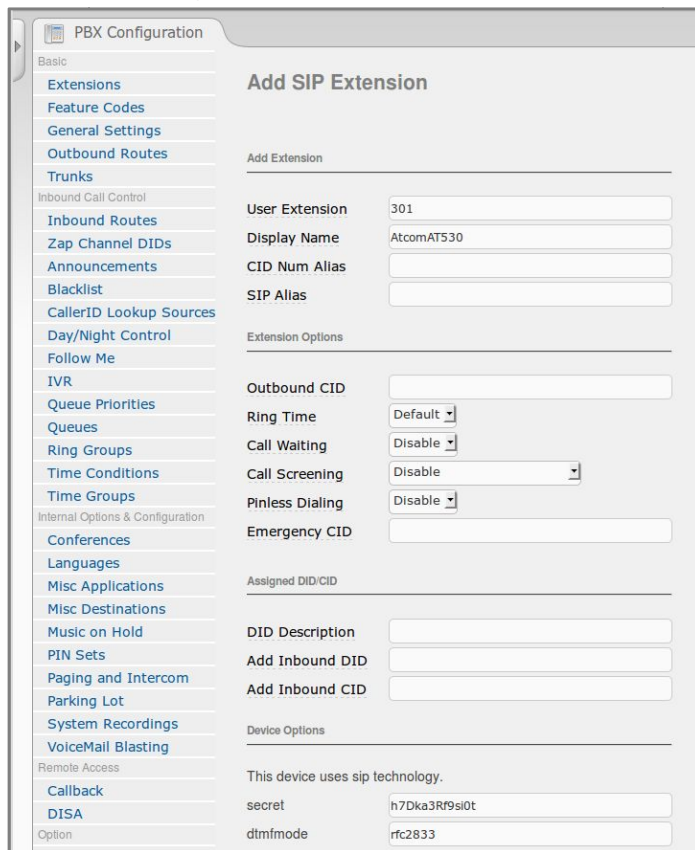
Figure 4-3. Add an Extension



6. On the Add SIP Extension page (Figure 4-4), fill in the following information:

- **User Extension** (301 in this example)
- **Display Name** ('AtcomAT530P' in this example)
- **secret** ('h7Dka3Rf9si0t' in this example)

Figure 4-4. Add SIP Extension

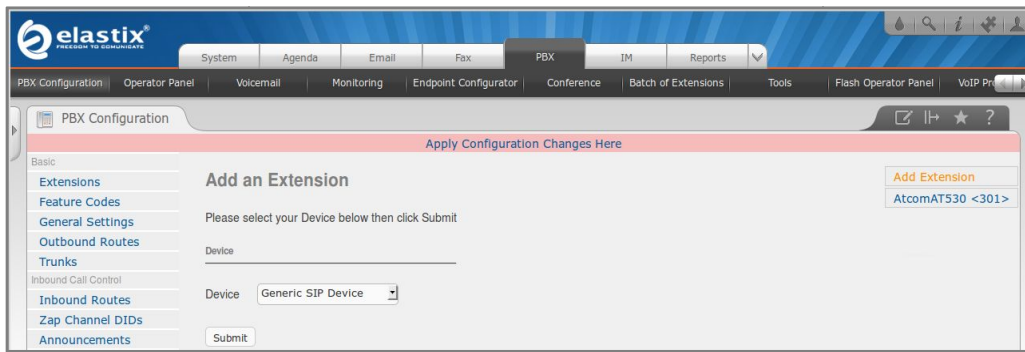


7. Click on the 'Submit' button at the end of the page. The extension will be created and you will see the page on Figure 4-5 displaying the "Apply Configuration Changes Here" pink ribbon on top of the screen.

8. Click in the "Apply Configuration Changes Here" link

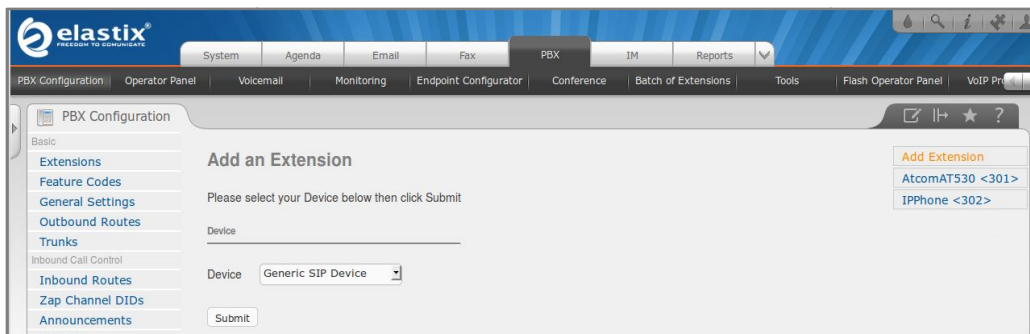


Figure 4-5. Apply Configuration Changes Here



9. With this you have just finished creating a SIP extension that will be used by the Atcom AT530P to register with the Elastix Server. Repeat Steps 5 through 8 to similarly create another extension (different values on Step 6) to be used by the IP (SIP) Phone to register as well (extension 302 in this example). Once finished you will see something similar to Figure 4-6

Figure 4-6. Atcom and IP Phone extensions successfully created



10. You will need to enter the information from the extension created on the Elastix Server into the Atcom Phone.

For the initial configuration, refer to the Atcom AT530P User Manual which can be found at: http://www.atcom.cn/products_iphone.html

Factory default settings

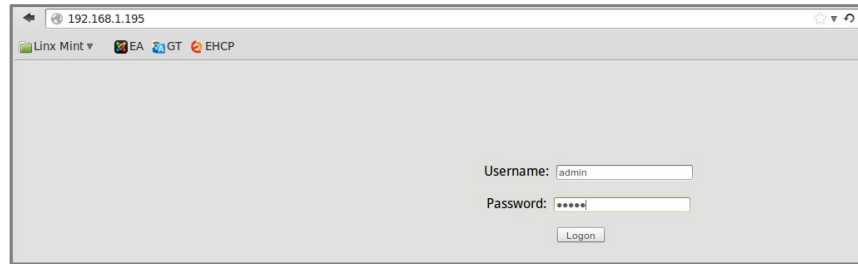
IP Addressing	DHCP
Web Access User Name	admin
Web Access Password	admin

11. Log in to the Atcom AT530P WebUI by pointing your browser to the Atcom Phone’s IP address.

12. When prompted, enter the Web Access Username and Web Access Password to access the Atcom WebUI (Figure 4-7).



Figure 4-7. Atcom AT530P WebUI



To register the Atcom Phone we have two methods: **Manual Configuration** and **AutoProvisioning using Elastix's Endpoint Configurator**.



MANUAL CONFIGURATION

1. Use the information from the Add SIP Extension page (Figure 4-4) to enter the following necessary information on “VoIP => SIP Config” section of the Atcom Phone WebUI:

- **Register Server Addr:** Elastix Server’s IP Address (192.168.1.65 in this example)
- **Register Username:** 301 in this example
- **Register Password:** ‘h7Dka3Rf9si0t’ in this example
- **Phone number:** 301 in this example
- **Enable Register:** Checked

Figure 4-8. Account Configuration

SIP [Registered] Configuration			
Register Server Addr	192.168.1.65	Proxy Server Addr	
Register Server Port	5060	Proxy Server Port	
Register Username	301	Proxy Username	
Register Password	h7Dka3Rf9si0t	Proxy Password	
Domain Realm		Local SIP Port	5060
Phone Number	301	Register Expire Time	60 seconds
Display Name		User Agent	Voip Phone 1.0
Encrypt Key		Server Type	common
DTMF Mode	DTMF_RFC2833	RFC Protocol Edition	RFC3261
Detect Interval Time	60 seconds	Transport Protocol	UDP
<input checked="" type="checkbox"/> Enable Register			

2. Once you have entered the required information, click on ‘Apply’ button located at the end of the page. The phone should be registered now. To check this, go to “Current State” section and see the state of the phone. If the phone is not registered, make sure you’ve entered the correct information (Figure 4.9).

Figure 4.9. State

Running Status				
Network				
	Connect Mode	Static	MAC Address	00:09:45:54:a7:a0
WAN	IP Address	192.168.1.195	Gateway	192.168.10.100
	Primary DNS	202.96.134.133	Alternate DNS	202.96.128.68
LAN	IP Address	192.168.10.1	DHCP Server	ON
VoIP				
SIP	Register Server	192.168.1.65	Proxy Server	Registered
	Register	ON	State	
	SIP Stun			
IAX2	IAX2 server		Register	Unregistered
	State	OFF		
Phone Number				
SIP LINE 1	301			
SIP LINE 2				
IAX2				

3. Configure the other IP (SIP) Phone with the correct parameters.



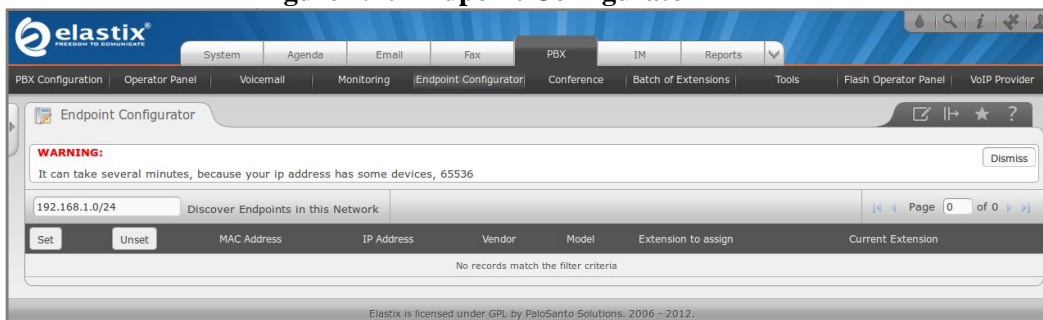
4. To test the Atcom AT530P, pick up the previously configured IP (SIP) Phone and call the AT530P's extension number (301 in this example). When the call is established, speak into the phone and verify that the other IP (SIP) Phone can hear your voice. Check this by calling from both ends. This step completes the manual procedure.



AUTOPROVISIONING USING ELASTIX’S ENDPOINT CONFIGURATOR

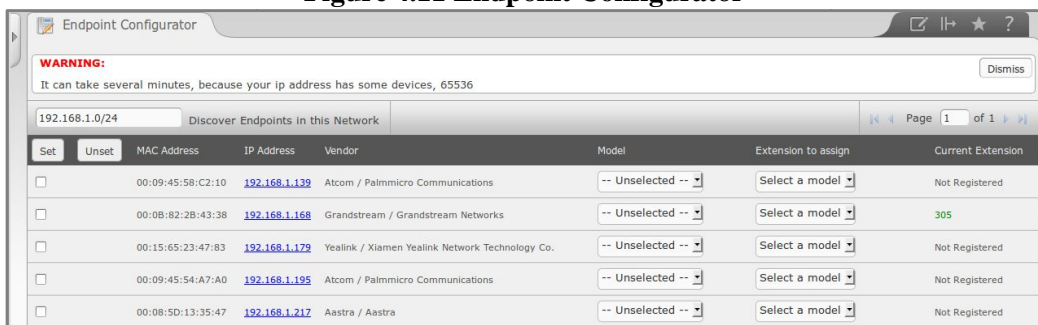
1. In the Elastix WebUI go to “PBX => Endpoint Configurator” (Figure 4-10).

Figure 4.10 Endpoint Configurator



2. Next to the “Discover Endpoints in this Network” button, type the address where the phone is located and hit Enter (or click the button). This will generate a list with all the phones available in that network (Figure 4-11).

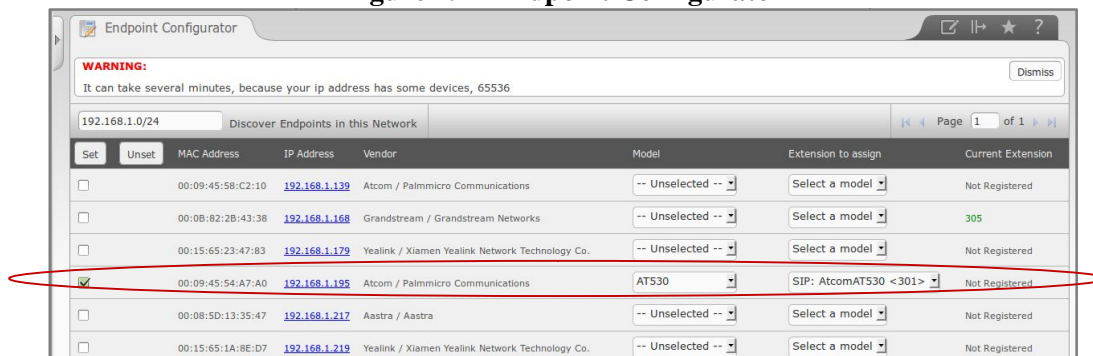
Figure 4.11 Endpoint Configurator



3. In the row where the phone you want to autoprovision is located (find it according to either its MAC or IP Address):
 - Mark the checkbox
 - From the drop-down list, select the correct “Phone Type” (phone model) of the phone
 - From the drop-down list, select the “User Extension” you want to assign to the phone



Figure 4.12 Endpoint Configurator



4. Click the “Set” button. This will reboot the phone. After the phone has finished rebooting, it will be automatically configured with the selected User Extension.
5. Configure the other IP (SIP) Phone with the correct parameters.
6. To test the Atcom AT530P, pick up the previously configured IP (SIP) Phone and call the AT530P’s extension number (301 in this example). When the call is established, speak into the phone and verify that the other IP (SIP) Phone can hear your voice. Check this by calling from both ends.