



**ATCOM<sup>®</sup>**

**IPPBX Upload Backup File User Guide**

---

Version: 2.0

2011-08-20

---

# Content

<b>CONTACT ATCOM.....</b>	<b>2</b>
<i>The Introduction of ATCOM .....</i>	<i>2</i>
<i>Contact Sales .....</i>	<i>2</i>
<i>Contact Technical Support .....</i>	<i>2</i>
<b>1. UPLOAD BACKUP FILE VIA SSH &amp; TFTP .....</b>	<b>3</b>
1.1 <i>Tools Download.....</i>	<i>3</i>
1.2 <i>Tools Configuration .....</i>	<i>3</i>
1.3 <i>Login IPPBX with Putty.....</i>	<i>4</i>
1.4 <i>Upload Backup file .....</i>	<i>4</i>
<b>2. UPLOAD BACKUP FILE VIA SCP .....</b>	<b>4</b>
2.1 <i>Tools Download.....</i>	<i>4</i>
2.2 <i>Login IPPBX with WinSCP.....</i>	<i>4</i>
2.3 <i>Upload Backup File .....</i>	<i>5</i>

---

## Contact ATCOM

### The Introduction of ATCOM

Founded in 1998, ATCOM technology has been always endeavoring in the R&D and manufacturing of the internet communication terminals. The product line of ATCOM includes IP Phone, USB Phone, IP PBX, VoIP gateway and Asterisk card.

### Contact Sales

Address	District C, east of 2nd floor, #3, Crown industry buildings, Chegongmiao Industry area, Futian district, Shenzhen, China
Tel	+ (86) 755-83018618-8888
Fax	+ (86) 755-83018319
E-mail	<a href="mailto:sales@atcomemail.com">sales@atcomemail.com</a>

### Contact Technical Support

Tel	(86) +755-83018618-8110
E-mail	<a href="mailto:Support@atcomemail.com">Support@atcomemail.com</a>

**Website Address:** <http://www.atcom.cn/>

**ATCOM Wiki Website:** [http://www.openippbx.org/index.php?title=Main\\_Page](http://www.openippbx.org/index.php?title=Main_Page)

**Download Center:** <http://www.atcom.cn/download.html>

There are two ways to upload backup files to ATCOM IPPBX: via **SSH & TFTP** and via **SCP**, you can choose either.

## 1. Upload Backup File via SSH & TFTP

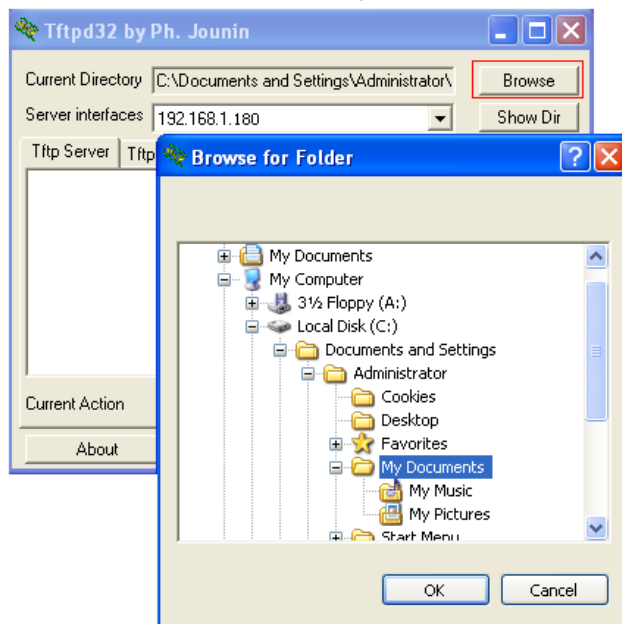
### 1.1 Tools Download

- 1) Tftp Download URL: <http://www.atcom.cn/downloads/IPPBX/tftpbood.exe>
- 2) Putty Download URL: <http://www.atcom.cn/downloads/IPPBX/putty.exe>

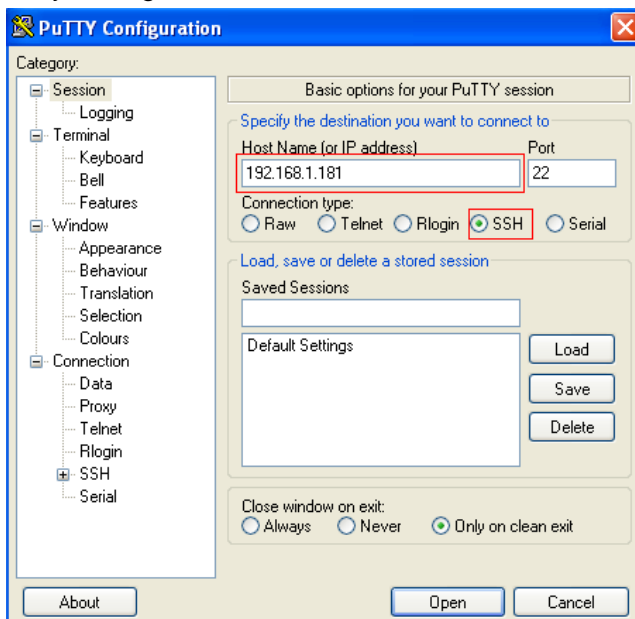
### 1.2 Tools Configuration

Assume that 192.168.1.180 is your PC IP address, 192.168.1.181 is that of IPPBX.

- 1) Choose backup file uploading directory as tftp server base directory



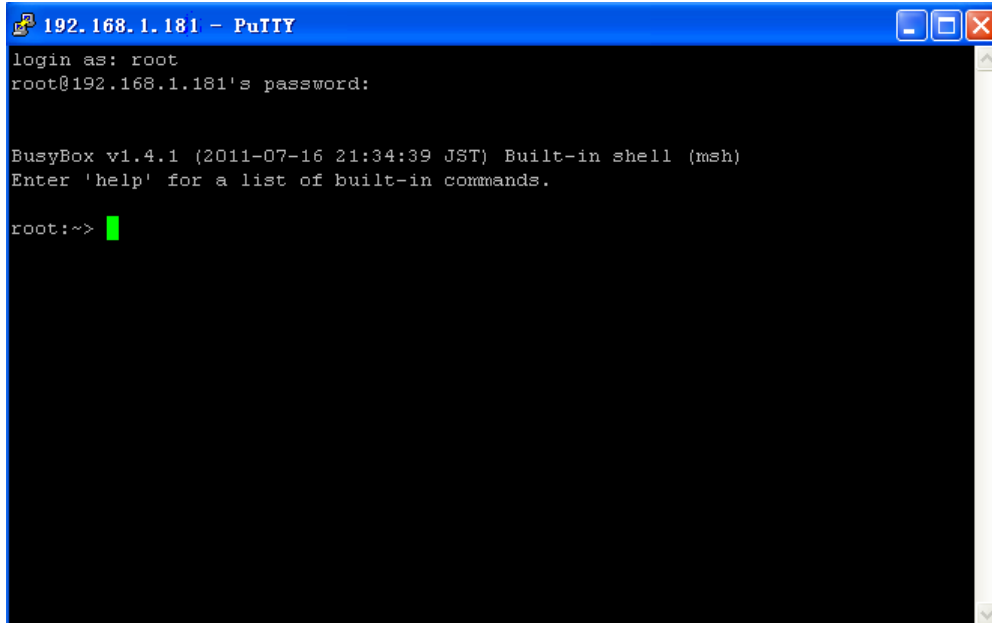
- 2) Putty setting



### 1.3 Login IPPBX with Putty

Name: root

Password: 12xerXes16



```
192.168.1.181 - PuTTY
login as: root
root@192.168.1.181's password:

BusyBox v1.4.1 (2011-07-16 21:34:39 JST) Built-in shell (msh)
Enter 'help' for a list of built-in commands.

root:~>
```

### 1.4 Upload Backup file

Assume that the backup file is backup\_2010testjisd2010jan15.tar

```
root:~>cd /persistent/var/lib/asterisk/gui_backups/
root:/persistent/var/lib/asterisk/gui_backups> tftp -gr backup_2010testjisd2010jan15.tar
192.168.1.180
root:/persistent/var/lib/asterisk/gui_backups>ls
```

## 2. Upload Backup File via SCP

### 2.1 Tools Download

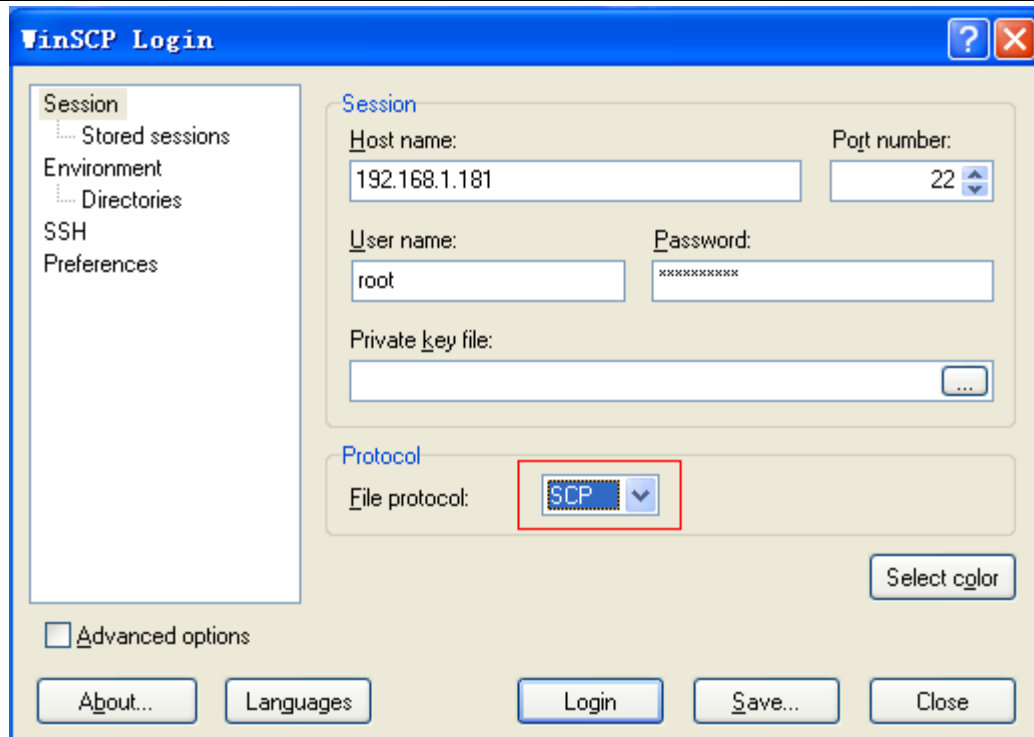
WinSCP Official Download URL : <http://winscp.net/eng/download.php>

### 2.2 Login IPPBX with WinSCP

Assume that 192.168.1.180 is your PC IP address,192.168.1.181 is that of IPPBX.

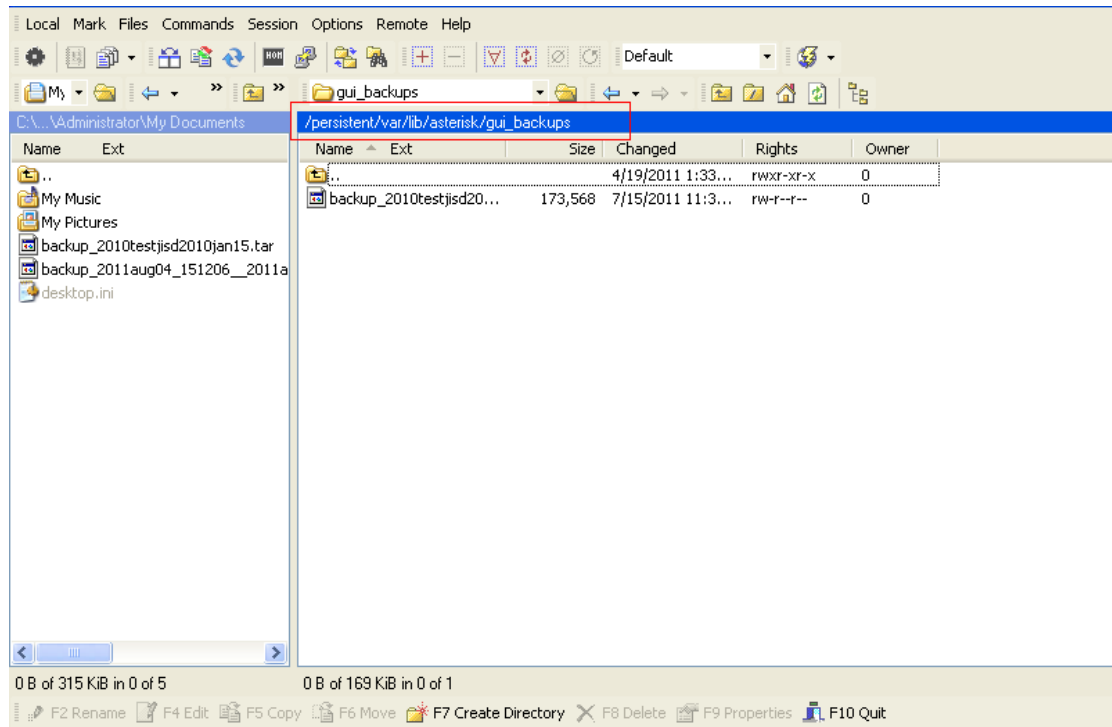
Name: root

Password: 12xerXes16



## 2.3 Upload Backup File

The left column is your local files, the right is files in IPPBX, enter /persistent/var/lib/asterisk/gui\_backups directory in IPPBX.



Drag backup\_2010testjisd2010jan15.tar from your local PC (left column) to IPPBX (right column).